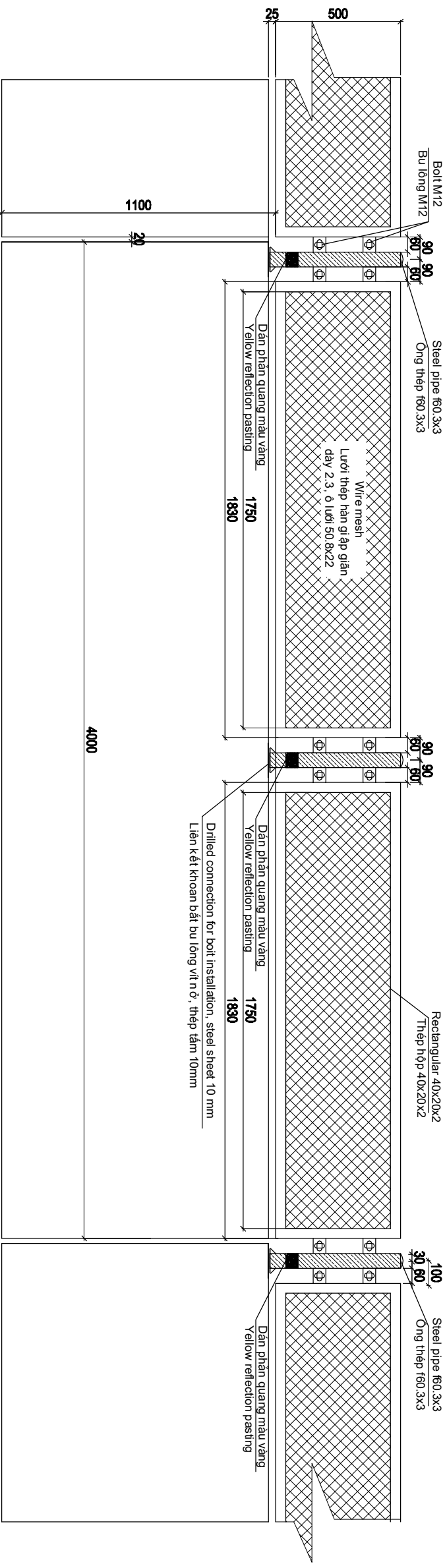
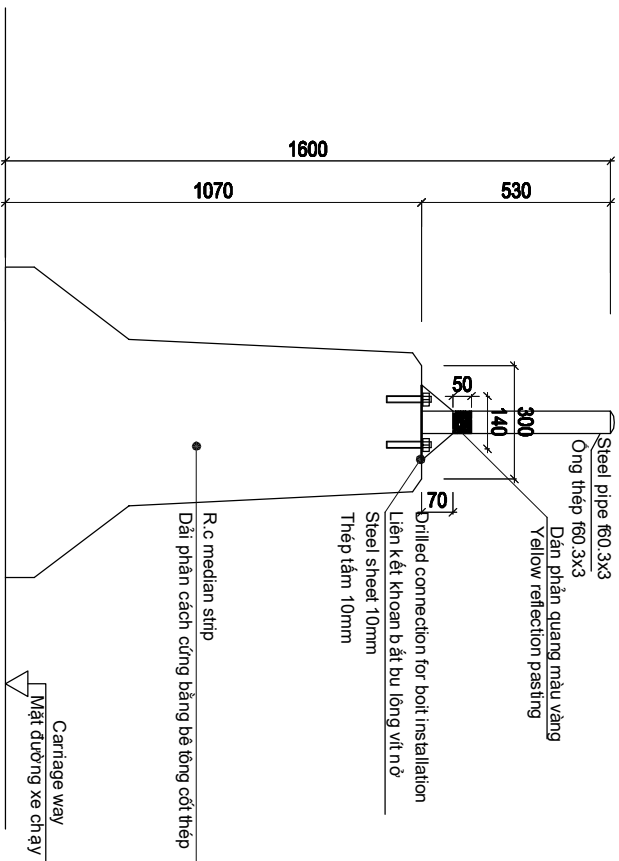


## DETAIL OF ANTI-GLARE PLATE/CHI TIẾT TẦM CHỐNG LỎA

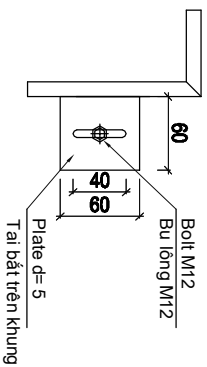


## On Way/Trên Tuyến



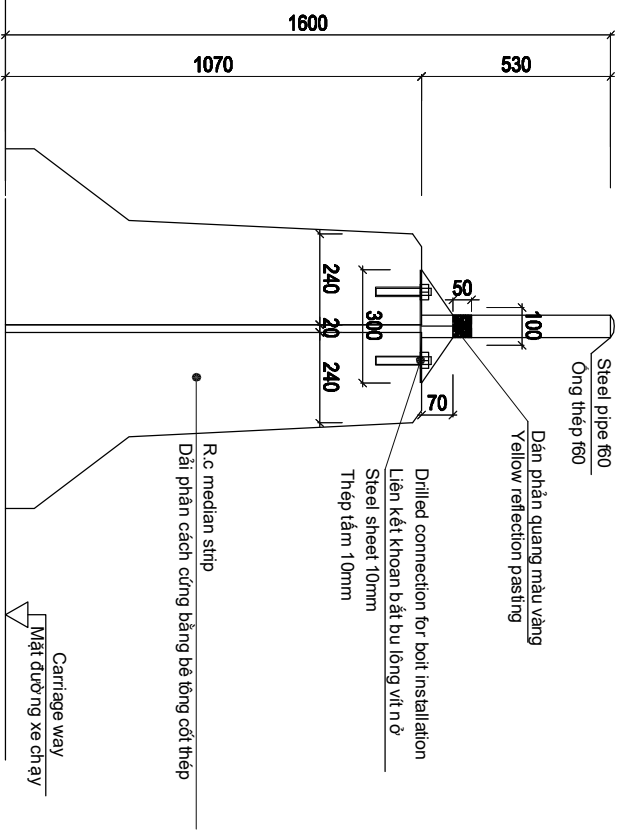
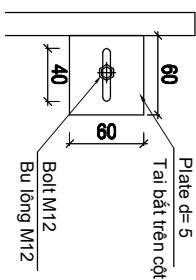
### Detail Of Frame Connection

## Chi Tiết Liên Kết Khung

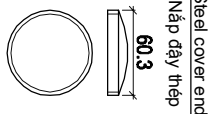
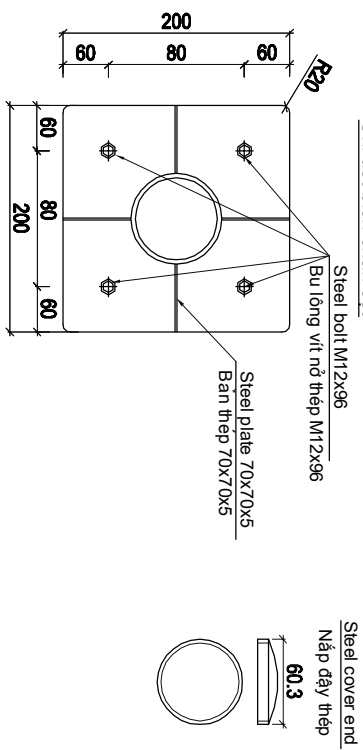


### Detail Of Post Connection

## Chi Tiết Liên Kết Cột



## On Bridge/Trên Cầu



**\*REMARK/GHI CHÚ:**

All dimension are millimeter

Steel sheet is connected with drilled bolt into DPC

Dimension of steel sheet on thruway (200x200x5)mm and on bridge (300x200x5)mm

Structure of median strip to be modified for the whole package

All parts (details) shall be hot-dipped galvanized

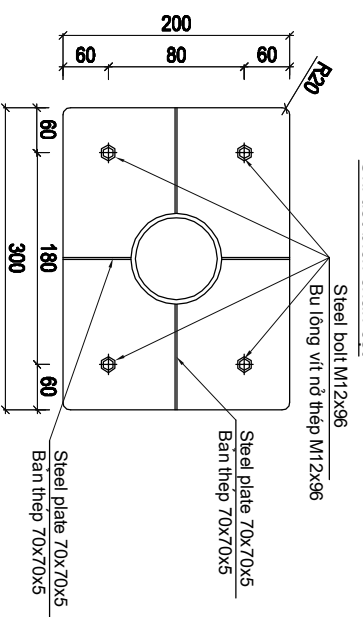
Toàn bộ kích thước ghi là mm

Mặt bích được thiết kế kết nối với Bulong Khoan vào DPC

Mặt bích được mặt bích (200x200x5)mm trên tuyến và (300x200x5)mm trên cầu

Cấu tạo dải phân cách trên đường sẽ được chỉnh sửa lại cho toàn bộ các gói thầu

Toàn bộ tấm, cột, bu lông được mạ kẽm nhúng nóng.



MINISTRY OF TRANSPORT VIETNAM		ENGINEERING DESIGN CONSULTANT		REMARKS:		DA NANG-QUANG NGAI EXPRESSWAY DEVELOPMENT PROJECT Package: 14B2 Section: Km099+500 - Km139+203.627			
CLIENT	PROJECT MANAGEMENT CONSULTANT	The Joint Venture of Nippon Koei Co., Ltd Nippon Engineering Consultants Co., Ltd. Chouda Co., Ltd. Thai Engineering Consultants Co., Ltd.							
VIETNAM EXPRESSWAY CORPORATION	PROJECT MANAGEMENT UNIT NO.85								
		DA NANG-QUANG NGAI EXPRESSWAY DEVELOPMENT PROJECT Package: 14B2 Section: Km099+500 - Km139+203.627							
		PREPARED BY	CHECKED BY	APPROVED BY	DETAIL OF ANTI-GLARE PLATE CHI TIẾT TẦM CHỐNG LỎA				
		NAME	HOANG DUC CHAU	IKISHIMOTO					
		SIGNATURE							
		DATE			SCALE	DRAWING NO.	REV. NO.		
					AS SHOWN	PKG14B2-ML-MBSC-160	3		